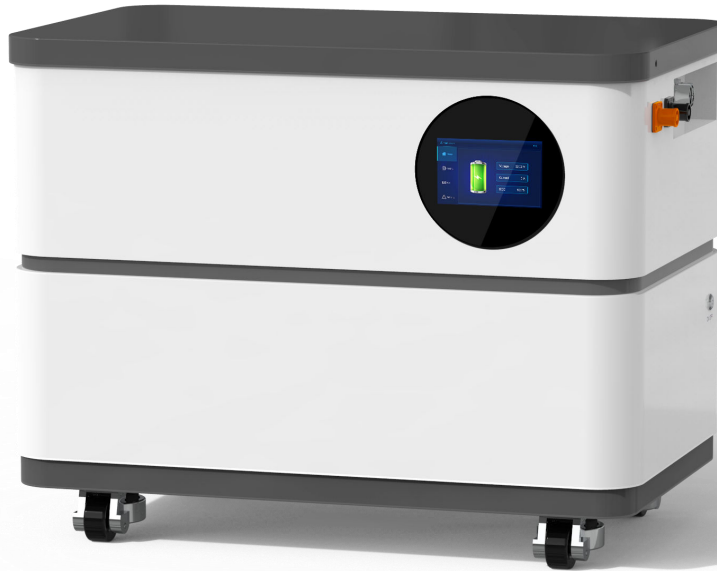


# Residential Energy Storage Battery (Low Voltage & Stackable)



SOL-10L-B



**High Efficiency**

Max. efficiency 94%



**Easy installation**

50 Kg Battery modules



**Safe and Reliable**

Lithium iron phosphate  
battery cells



**Perfect Compatibility**

Work with leading branded inverters

## Product Information



Scalable from 5 kWh to 60 kWh



Compatible with a variety of mainstream inverter



Maximum Flexibility for any Applications with up to 12  
Modules Connected in Parallel



LFP battery, safest and long cycle life



Stackable design, effortlessly installation



Capable of High-Powered Emergency-Backup  
and Off-Grid Function

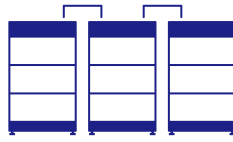
### Battery Module

- 5.12 kWh per Module
- Modular and Stack Installation Design to simplify the maintenance
- Connect up to 12 module in parallel for a maximum size of 60 kWh

## Flexible, Efficient, Simple



**Plug Connection**  
No Additional Wiring Required



**5-60KWH**  
Tailored Sizing for Each Application



**Extend Anytime**  
Easily Adapts to New Requirements



**High Power**  
Power for Every Application

## Technical Parameters

Battery mode	SOL-10L-B	
Combination Method	16S1P	
Rated Capacity	Typical	200Ah
	Minimum	196Ah
Rated Voltage	51.2V	
Limited Discharge Voltage	43.2V	
Limited Charging Voltage	57.6V	
Internal Resistance(single battery pack)	≤20mΩ	
Max Continuous Charging current	100A	
Max Continuous Discharging Current	100A	
Operation Temperature Range	Charge:0~50℃/ Discharge: -10~50℃	
Storage Temperature Range	-20~+60℃,Recommend: ≤60±25%RH storage humidity	
Single Module Size/weight	680*429*215mm /50Kg±1Kg	
Overall Size/weight	680*429*540mm /115Kg±1Kg	